

LUNA 8

User Guide V1.0



ZOOMAX Technology Co., Limited

9F, Building D, Paradise Software Park, No.3 Xidoumen Road, Xihu District, Hangzhou, China 310012

Copyright© 2021 ZOOMAX Technology Co., Limited. All Rights Reserved. ZOOMAX® is a trademark of ZOOMAX Technology Co., Limited in the United States and other countries. Information in this document is subject to change without notice. No part of this publication may be reproduced or transmitted in any forms or by any means, electronic or mechanical, for any purpose, without the express written permission of ZOOMAX.

CONTENT

1. INTRODUCTION	1
2. SAFETY AND MAINTENANCE	1
3. GET TO KNOW THE LUNA 8	2
3.1 WHAT'S IN THE BOX	2
3.2 GENERAL DESCRIPTION	3
3.3 CHARGE THE BATTERY	5
4. BASIC OPERATION	5
4.1 HOW TO OPEN/CLOSE THE FOOT STAND OF LUNA 8.....	5
4.2 POWER ON/OFF	6
4.3 NEAR/DISTANCE-VIEW.....	6
4.4 ZOOM CONTROL	6
4.5 SELECT COLOR MODE	6
4.6 PANNING MODE AND SAVE FUNCTION	7

5. ADVANCED OPERATION.....	8
5.1 MAIN MENU.....	8
5.2 SYSTEM SETTINGS	14
6. CONNECT WITH COMPUTER/TV/MONITOR	16
6.1 TRANSFER FILES WITH PC.....	16
6.2 CONNECT TO TV OR MONITOR.....	17
7. TROUBLESHOOTING.....	17
8. TECHNICAL SPECIFICATION	19
9. OTHER PRODUCTS FROM ZOOMAX	19

1. Introduction

Please read this user guide carefully. This guide will help you better understand the features of Luna 8.

We constantly seek to improve our products. Therefore, it is possible that this guide is not the latest version available. You can download the latest user's guide in the Technical Support section at www.zoomax.com

2. Safety and Maintenance

To maintain Luna 8 in optimal condition:

- To avoid risk of fire, do not expose Luna 8 to excessive heat or direct sunlight.
- Use the Luna 8 in environments where the temperature is between 10°C and 40°C (50°F and 104°F).
- To avoid the risk of electrical damage, keep Luna 8 away from fluids and chemicals.

- To avoid the risk of electrical shock, do not attempt to disassemble the unit. Please refer service requests to Zoomax or an authorized repair facility.
- Always unplug the Luna 8 before cleaning. Use a cleaning cloth or a soft damp cloth to clean the exterior. Do not use cleaning agents or abrasive material, as they will damage your video magnifier.

3. Get to Know the Luna 8

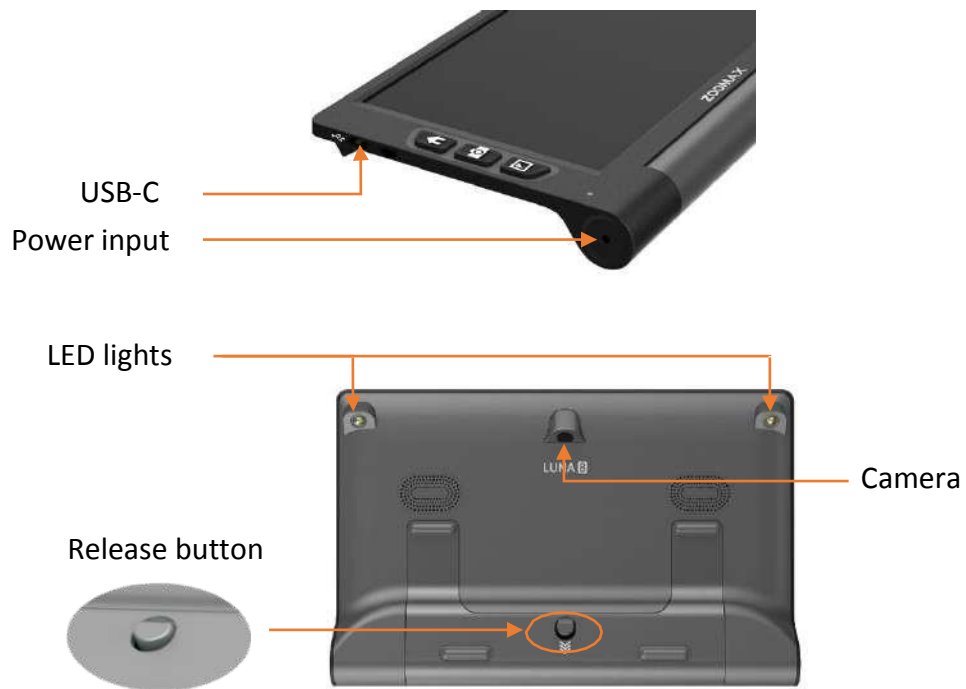
3.1 What's in the Box

You will find the following items inside the Luna 8 package box:

- Luna 8
- Carrying case
- USB cable
- Cleaning cloth
- User guide
- Power adapter
- HDMI cable

3.2 General Description






3.3 Charge the Battery

The battery **MUST** be fully charged before **FIRST** use with the supplied power adapter. The power indicator light is **RED** while the device is charging.

When the battery is fully charged, the power indicator light will turn green. It will take less than 3 hours to fully charge the battery.

You can use the Luna 8 for about 8 hours of continuous use. When the battery is low, the low battery icon  will be shown in the lower left corner. Please recharge the battery in case the device turns off unexpectedly.

4. Basic Operation

4.1 How to Open/close the Foot Stand of Luna 8

Push the Release button on the back cover lower to open the Foot Stand. Push both sides of the Foot Stand to close.

4.2 Power on/off

Press the Power button for about 3 seconds to turn the Luna 8 on. You can turn the device off in the same way.

The device will shut down automatically after 5 minutes of inactivity. You can deactivate this power saving function in System Settings. Please refer to section “Power Saving on/off” on page 15.

4.3 Near/distance-view

Open or close the Foot Stand to switch between Near-view and Distance-view Mode.

4.4 Zoom Control

Press Zoom in button to increase magnification and press Zoom out button to reduce magnification.

4.5 Select Color Mode

The color modes include full color and 5 high contrast color combinations: white/black, yellow/black, white/blue, green/black, and yellow/blue.

You can choose your favorite color mode in the Settings menu. Please refer to section “Color Mode” on page 12.

Press the Mode button for 1 second in high contrast color mode to quickly switch to full color mode.

4.6 Panning Mode and Save Function

By default, the camera is auto focus. Press Freeze button to freeze a real-time image.

Panning Mode

Panning Mode is available on frozen images.

To activate, first press the Freeze button to capture the image and then press the zoom-in button to magnify the image. Next, press and hold the Home button along with any of the Freeze/Mode/Zoom-out/Zoom-in buttons to move the image up/down/left/right respectively. Press and release the Freeze/Mode/Zoom-out/Zoom in buttons to move the image a little bit at a time. Press and hold the Freeze/Mode/Zoom-out/Zoom-in buttons to pan continuously.

Press the Mode/Zoom-in/Zoom-out buttons alone to change colors or magnification level of a frozen image.

Save Image

Press the Freeze button and the Zoom in button simultaneously to save the frozen image. A tick/check icon will appear on the screen indicating the image has been saved.

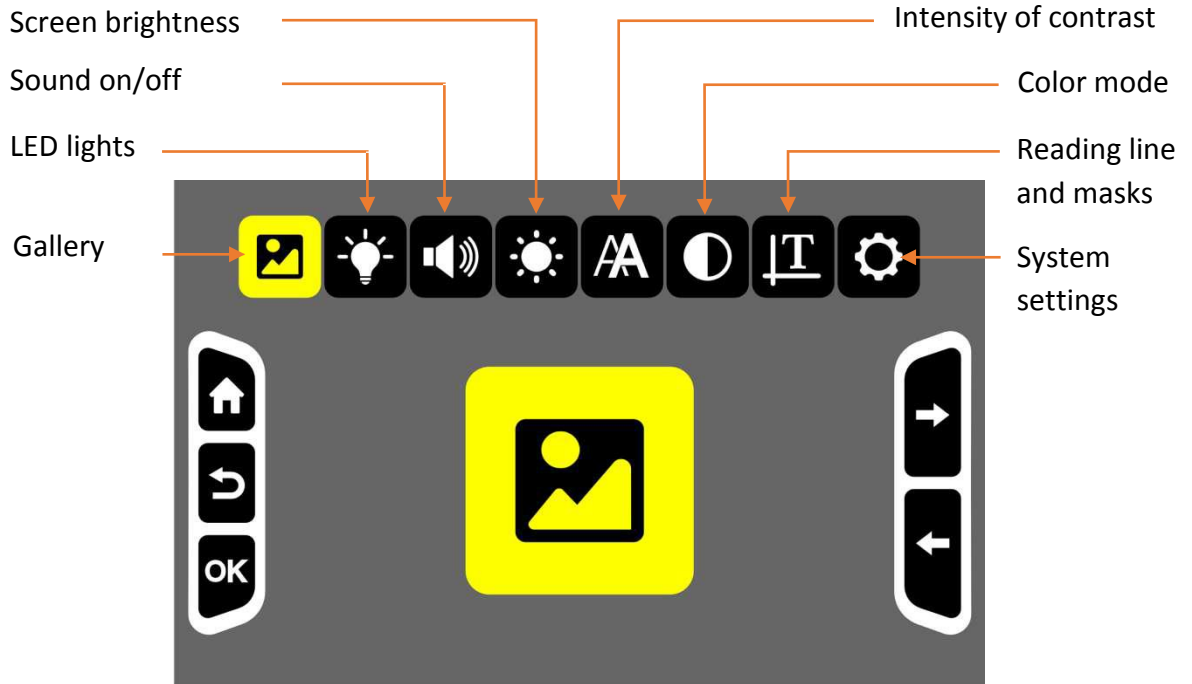
5. Advanced Operation

5.1 Main Menu

Enter/exit Main Menu

In the real-time view, short press Home button to activate the Main Menu (Please refer to the figure on the next page).


Press the Home button or Freeze button to go back.



How to Select an Option in the Menu

To select the options in the menu, move the Zoom in/out button to cycle through the icons. Press the Mode button to confirm, the Freeze button to go back, or the Home button to exit.

Gallery

After choosing Gallery icon , press the Mode button to enter the gallery. Press the Zoom in/out buttons to cycle through the images, then press the Mode button to confirm and view the image selected. You can change the color mode or view details of the imaging using panning function. Please refer to chapter 4.6 on page 7, section “View Frozen Image”.

Press the Freeze button and Zoom out button simultaneously to delete the image. Press the Freeze button to go back.

LED Lights on/off

Choose this option to switch LED lights on and off. Press the Mode button to confirm and enter the setting page. Then press the Zoom in/out button to select the four options. Press the Mode button to confirm.

By default, both LED lights are turned on in Near-view Mode and turned off in Distance-view Mode.

Sound on/off

Choose this option to set the system sound. Press the Mode button to confirm and enter the setting page. Then press the Zoom in/out buttons to select “sound on” or “sound off”, and press the Mode button to confirm.

The sound is turned on by default.

Screen Brightness

Choose this option to adjust the screen brightness. Press the Mode button to confirm and enter the setting page. Then press Zoom in/out buttons to change the screen brightness. Then press the Mode to confirm. Press the Freeze button or Home button to exit.

Intensity of Contrast

The crispness of text in high contrast color mode can be affected by the lighting conditions around you, and by the reading material itself. It's possible to adjust contrast up or down.

First, choose the intensity of contrast icon to adjust the intensity of contrast, then press the Mode button to confirm and enter the setting page. Press Zoom in/out buttons to change the intensity. Then press the Mode button to confirm. Press the Freeze button or Home button to exit.

NOTE: In real-time view, you can also press Mode button and Zoom in/out button simultaneously to increase/decrease the intensity level.

Color Mode

Choose this option and press the Mode button to enter the setting page. You can hide the high contrast colors you do not like.

Press Zoom in/out button to move between the colors. Press the Mode button to select or deselect a specific color mode. A slash line on an icon

means the color mode chosen is hidden. Press the Mode button to confirm. Press the Freeze button or Home button to exit.

Reading Line or Masks

Choose this option to set the reading line or masks. Press Mode button to enter the setting page and press the Zoom in/out button to cycle through five settings. Press the Home button and Zoom in/Zoom out button simultaneously to adjust the line position or the width of reading masks.

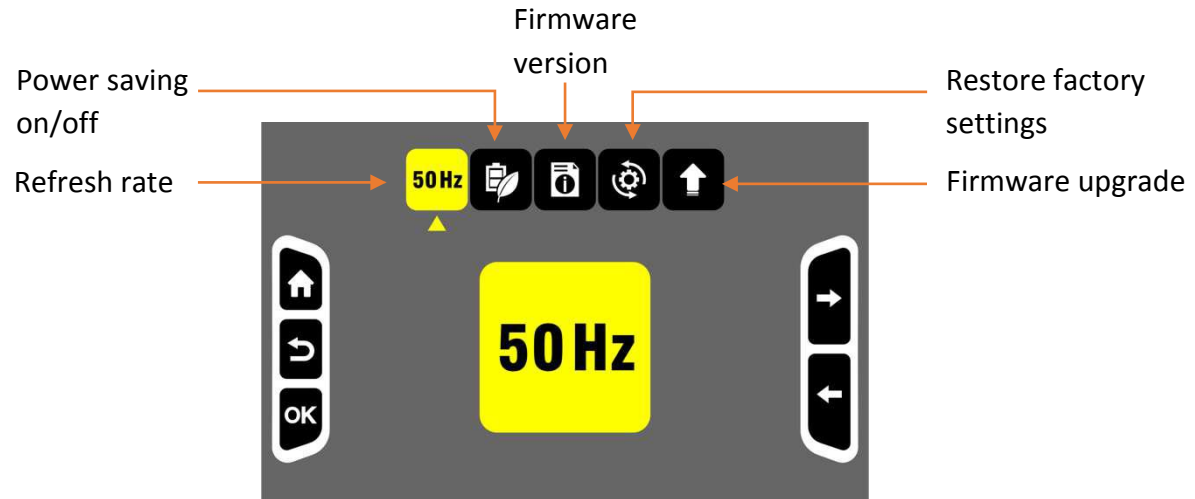
NOTE: You can also press Zoom in and Zoom out buttons to activate reading line and masks.

System Settings

Choose this option and press Mode button to enter “System Settings” page. Please refer to chapter 5.2 for more information.

5.2 System Settings

System settings can be accessed through Main Menu -> System Settings. It is recommended to consult your supplier for system settings.



After entering the System Settings page, press Zoom in or Zoom out buttons to select the icon, press Mode button to confirm and enter the next level.

Refresh Rate

To change the refresh rate, choose the 60Hz/50Hz icon (it will display either 60Hz or 50Hz) and press Mode button to enter settings. Then press Zoom in/out button to choose between the options. Then press Mode button to confirm or press Freeze button to go back. The default refresh rate is 60Hz.

Power Saving on/off

By default, Luna 8 will shut down automatically after 5 minutes of inactivity. This power saving function can be turned off.

To turn off power saving function, choose the power saving icon and press the Mode button to enter the setting page. Press Zoom in/out button to enable or disable the power saving function. Press Mode button to confirm or Freeze button to go back.

Firmware Version

This option shows the software version of Luna 8.

Restore Factory Settings

When selected, Luna 8 will be restored to factory settings.

Firmware Upgrade via USB Flash Drive

For Zoomax service/distributor use only.

6. Connect with Computer/TV/Monitor

6.1 Transfer Files with PC

- Make sure that Luna 8 and your computer are turned on. Connect the computer and Luna 8 with the supplied USB cable.
- To transfer files:
Choose the folder “Luna 8” (the folder path is: Computer > Luna 8 > DCIM). Select the picture to transfer.

6.2 Connect to TV or Monitor

To view images on a larger screen, use the supplied HDMI cable to connect Luna 8 to an HDMI TV or monitor. For most TVs, it will be necessary to change the input source to view the image from Luna 8. Once connected, the image from Luna 8 will be shown on your TV or monitor.

7. Troubleshooting

Problem 1: Black screen.

Solutions:

- Ensure that the power is on.
- Charge the battery.
- Decrease the magnification level or change the color mode.

Problem 2: The image on the screen is dark or distorted.

Solutions:

- Ensure the unit is placed flat on the viewed material.

- Ensure the LED lights are on.
- Check screen brightness level.

Problem 3: Smudges or blemishes on the screen.

Solution: Clean camera and screen with soft cloth.

Problem 4: The unit is connected to a TV, but no image appears on the TV screen.

Solutions:

- Ensure the TV is on.
- Ensure that Input Source on TV is set correctly.
- Make sure the HDMI cable is connected correctly to TV.

Problem 5: Any other problem not mentioned in this guide.

Solutions:

- Press Power button for 10 seconds to force system shutdown.
- If all else fails, please contact your local Zoomax distributor or Zoomax support for assistance.

8. Technical Specification

- **Magnification:** 2.5X - 19X
- **Color modes:** full color and 10 high contrast color modes
- **Screen:** 8-inch screen; screen resolution: 1280 x 800
- **Camera:** auto focus; 13MP
- **Weight:** 500g (1.1lbs)
- **Dimensions:** 218 x 143 x 11mm (8.6 x 5.6 x 0.4 in)
- **Battery life:** about 8 hours continuous use
- **Charging time:** less than 3 hours
- **Power adapter:** Input: 100-240V; Output: 5V/3A

9. Other Products from ZOOMAX

Check out our full line of products (handheld magnifiers, desktop magnifiers, and wearable devices) by visiting www.zoomax.com.

ZOOMAX TECHNOLOGY CO., LIMITED

9F, Building D, Paradise Software Park,
No.3 Xidoumen Road, Xihu District, Hangzhou,
Zhejiang Province, 310012, China

Tel: +86-571-87006308

Fax: +86-571-87397220

Email: support@zoomax.com

Visit us at: www.zoomax.com



Zoom Your Vision, Max Your Life